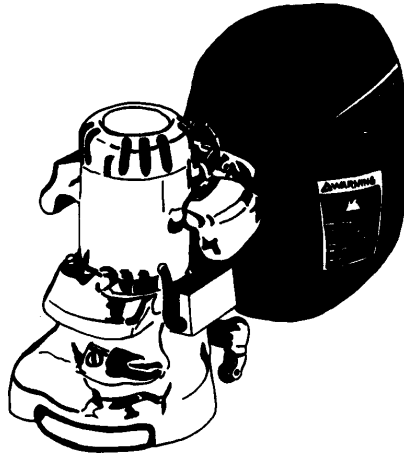


IVIE Enterprises

www.ivie-ent.com Ph:(918)254-5161 or (888)262-5161 Fax:(918)250-4807



**Service
Manual**



**American
B-2+
7" Spinner Edger**

READ THIS BOOK

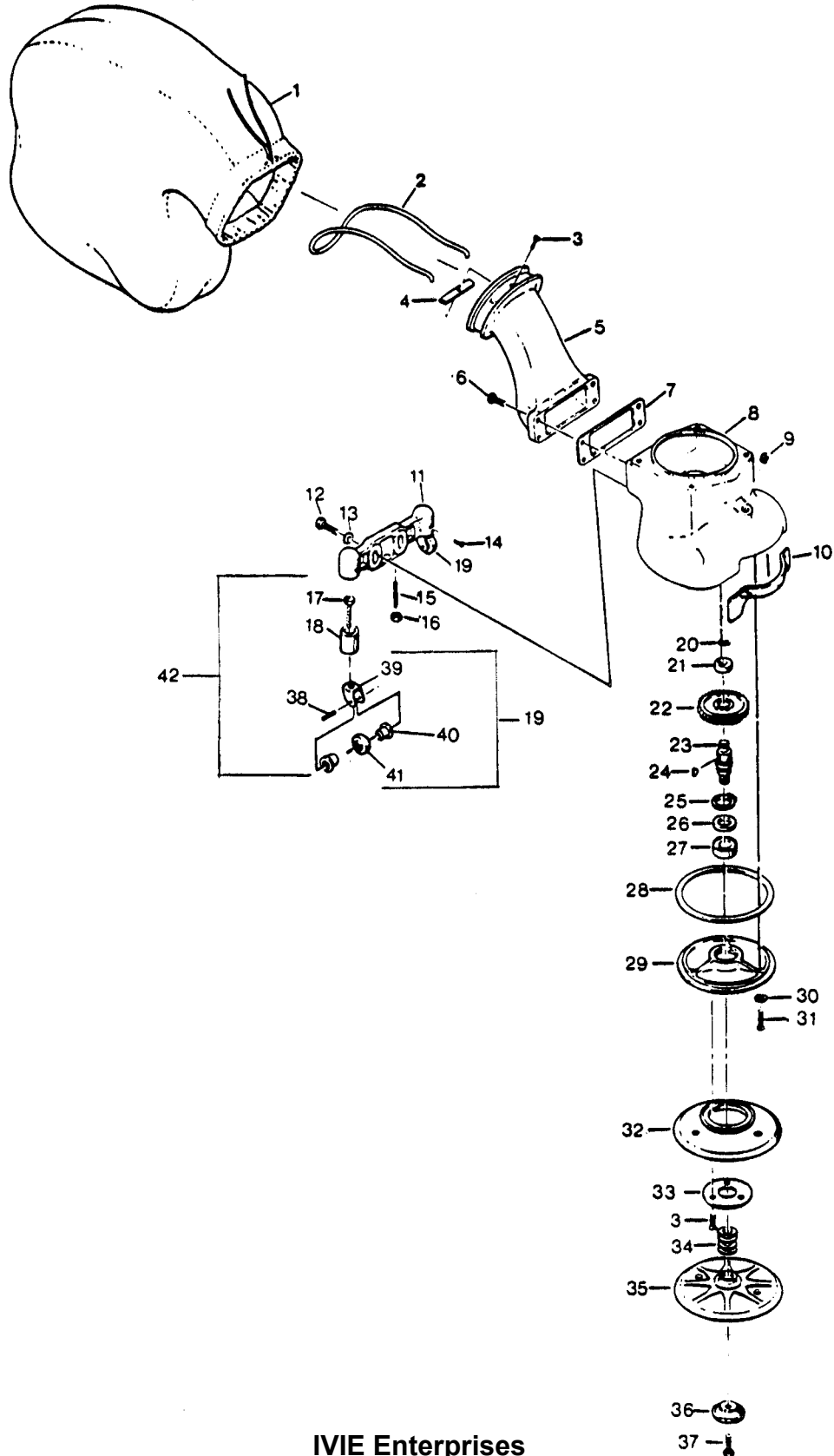
This book has important information for the use and safe operation of this machine. Failure to read this book prior to operating or attempting any service or maintenance procedure to your ALTO machine could result in injury to you or to other personnel; damage to the machine or to other property could occur as well. You must have training in the operation of this machine before using it. If cannot read English, have this manual explained fully before attempting to operate this machine.

Si Ud. no pueden leer el Inglés, se hagan explicar este manual completamente antes de tratar el manejo o servicio de esta máquina.

All directions given in this book are as seen from the operator's position at the rear of the machine.

For new books write to: ALTO U.S. Inc., 2100 Highway 265, Springdale, Arkansas 72764.

AMERICAN SANDERS TECHNOLOGY
 Model American B-2+ 7" Spinner Edger
 Drawing #1 3/00



IVIE Enterprises

www.ivie-ent.com

Ph:(918)254-5161 or (888)262-5161 Fax:(918)250-4807

AMERICANSANDERS TECHNOLOGY
Model American B-2+ 7" Spinner Edger
Parts List #1 3/00

Ref.	Part No.	Description	Qty.	Ref.	Part No.	Description	Qty.
1◆	50953A	Bag, Dust	1	22	23700A	Gear	1
2	67114A	Rod-Dust Bag Support	1	23	67426A	Shaft	1
3	84200A	Screw - 8-32 x ½ Flt Hd	4	24	915028	Key	1
4	66920A	Bar	1	25	57702A	Ring - Retaining	1
5	26103A	Pipe - Discharge	1	26	58114A	Seal - Oil	1
6	96245A	Screw - ¼ - 20 x 1	4	27	902550	Bearing	1
7	34233A	Gasket	1	28	34232A	Gasket	1
8	24509B	Housing - Gear	1	29	12906A	Cover - Gearcase	1
9	66130A	Plug	1	30	59817A	Washer - 1/4 Nylon Countersink	3
10	38103A	Gasket	1	31	962098	Screw - ¼-20 x ¾ Fit Hd	3
11	21106A	Barcket - Caster	1	32	15000A	Guard - Roller	1
12	85814A	Screw - 5/16 -18 x 1¼ Hx Hd	2	33	66917A	Retainer	1
13	980676	Washer - 5/16 Fit	2	34	39707A	Washer - Felt	4
14	962015	Screw-Set 10-24 x 3/8	2	35	13200A	Disc - Sanding	1
15	86203A	Screw - 5/16-18 x 1½ St	2	36	62411A	Clamp - Paper	1
16	920160	Nut - 5/16-18 Hx Jam	2	37	85715A	Screw - 5/16-18 x 1 Hx Hd	1
17	85701A	Screw-¼-20 x 1½ Hx St	2	38	925592	Pin ¼ x 1 Spirol	2
18	51128A	Bearing	2	39	29404A	Yoke, Edger Caster	2A
19	19901A	Yoke Assembly - Caster	2	40	50740A	Bearing, Ball, ¼ x ¾ Shield	4
20	467308	Ring - Retaining	1	41	299704	Roller Caster	2
21	51127A	Bearing	1	42	12203A	Caster Assembly	2

NOTE: ◆ indicates a change has taken place since last publication of this manual

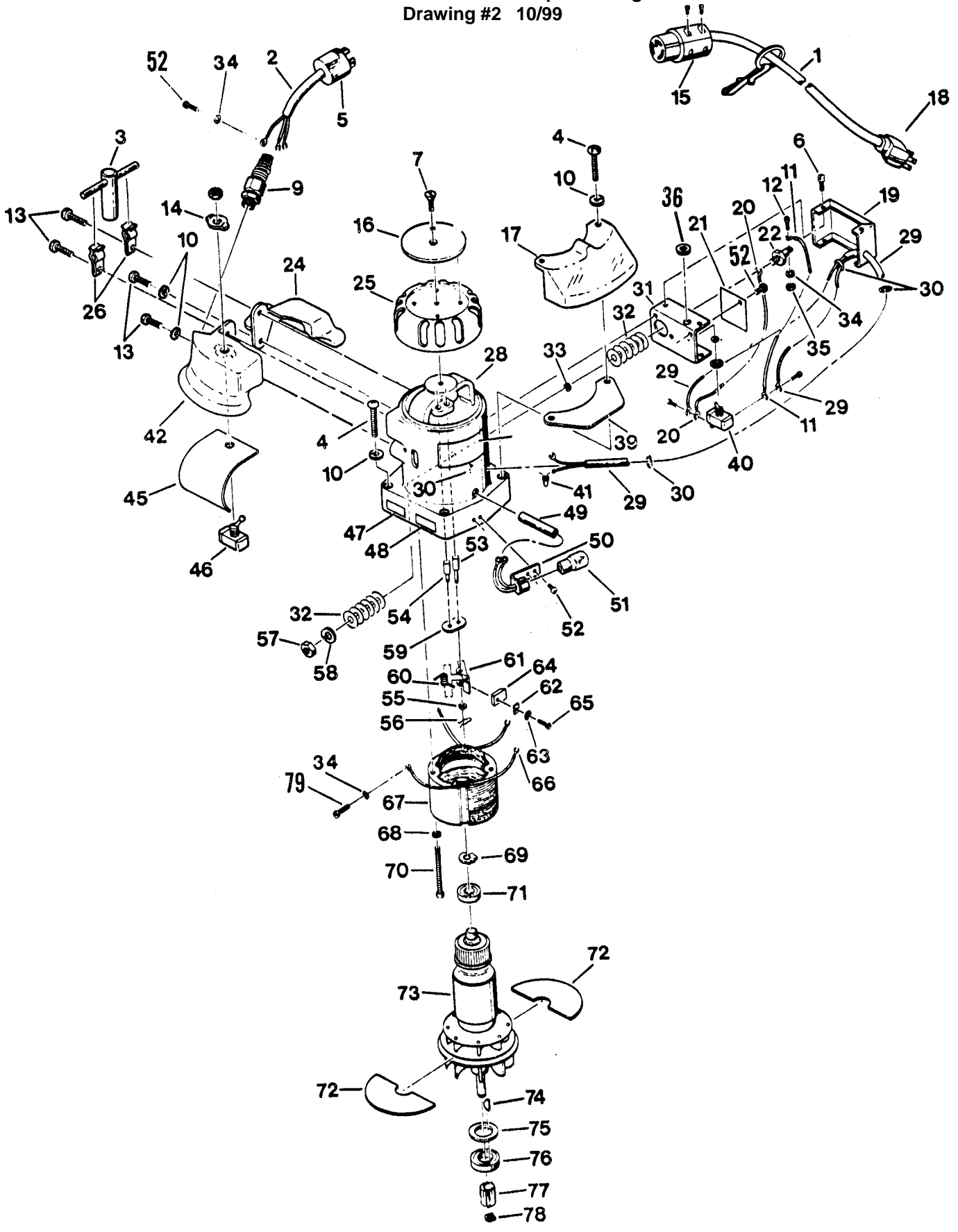
Note: Ref. #19 (19901A) includes ref #'s 17, 38, 39, 40 (2), & 41

Note: Ref. #42 (12203A) includes ref #'s 17, 18, 38, 39, 40 (2), & 41

IVIE Enterprises

www.ivie-ent.com Ph:(918)254-5161 or (888)262-5161 Fax:(918)250-4807

AMERICAN SANDERS TECHNOLOGY
 Model American B-2+ 7" Spinner Edger
 Drawing #2 10/99



AMERICANSANDERSTECHNOLOGY
Model American B-2+ 7" Spinner Edger
Parts List #2 10/99

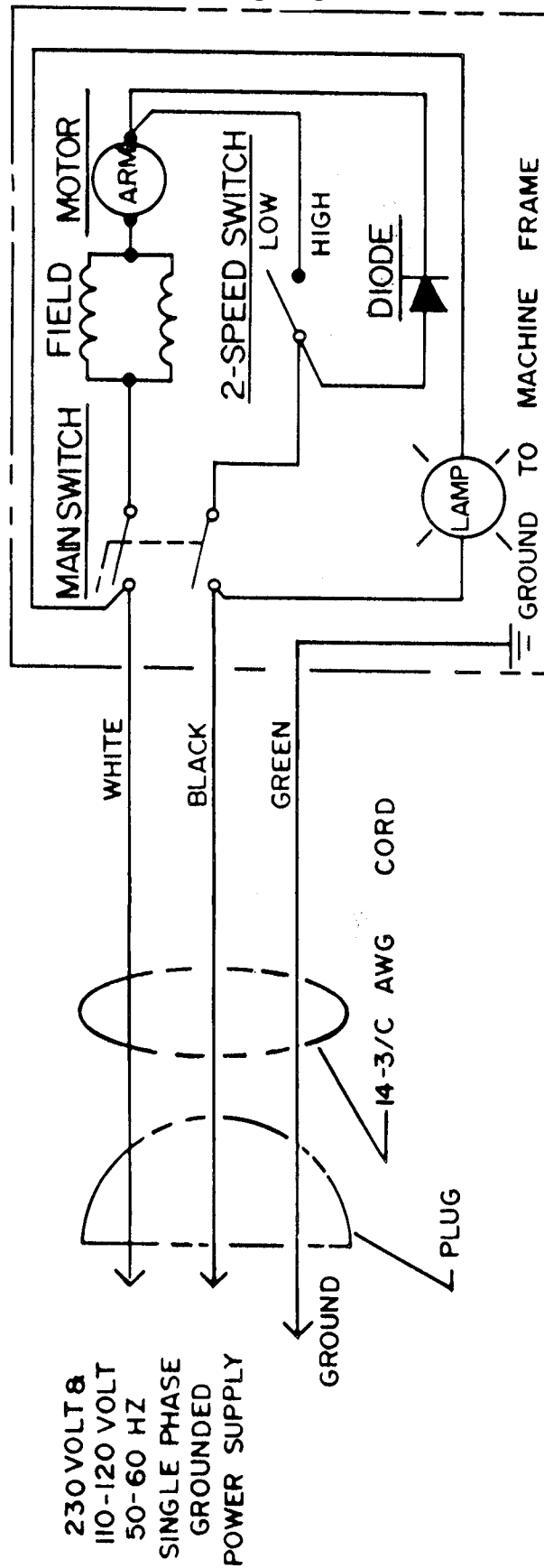
Ref.	Part No.	Description	Qty.
1	42300A	Cord Assembly - 115 V	1
	42301A	Cord Assembly - 230 V	1
	40007A	Cord Assembly, 50', w/AU1-10P	1
2	41919A	Cord - Interconnecting - 115 V	1
	41920A	Cord - Interconnecting - 230 V	1
	68705A	Wrench - Special	1
4	85333A	Screw - 1/4-20 x 2 Pn Hd	4
5	912169	Plug - Male Twist Lock - 115 V	1
	45602A	Plug - male Twist Lock - 230 V	1
6	85411A	Screw - 6-32 x1/4	4
7	80081A	Screw - 5/16-24 x 1/2 FT	1
9	337504	Strain Relief	1
10	980657	Washer - 1/4 Lock	8
11	49301A	Wire Assembly	1
12	962330	Screw - 6-32 x 1/4 RD St Mach	1
13	962454	Screw - 1/4-20 x 1	4
14	646302	Plate - Switch	1
15	911461	Connector 115V	1
	41708A	Connector 230V	1
16	70053A	Plate - Name	1
17	22113A	Cover	1
18	45603A	Plug - 230V	1
	911248	Plug -115V	1
	40023A	Plug, AU1-10P	1
19	16091A	Switch Box	1
20	49302A	Wiring Assembly	1
21	46711A	Paper Insulating	1
22	42400A	Diode	1
24	24303A	Handle - Left	1
25	62003A	Cap - Motor Housing	1
26	64601A	Holder - Wrench	2
28	24510A	Housing - Motor	1
	24535A	Housing - Motor (AU)	1
29	41918A	Wiring Assembly	1
30	54816A	Relief - Strain	4
31	16091A	Box - Switch	1
32	48800A	Washer - Insulating	12
33	41001A	Bushing - Insulating	3
34	87201A	Washer - Lock #6	4
35	920112	Nut - 6 x 32 Hex	1
36	50431A	Plate, Switch Hi-Lo	1
39	38104A	Seal	1

Ref.	Part No.	Description	Qty.
40	47320A	Switch - Toggle HiLo	1
41	911139	Nut - Wire	1
42	24302A	Handle - Right	1
45	46710A	Shield - Insulating	1
46	47322A	Switch - On/Off	1
47	215103	Label	1
48	215110	Label	1
49	39305A	Tubing	1
50	18403A	Socket	1
51	911113	Bulb - 115V	1
	911116	Bulb - 230V	1
52	962065	Screw - 8-32 x 1/4 Pn St Mach	6
53	17406A	Pin Assembly - Brush Swivel	2
54	17407A	Pin Assembly-Brush Spring Stop	2
55	980643	Washer - 7/16 OD x .036 Thk	2
56	80200A	Pin	2
57	81300A	Nut	1
58	980601	Washer - SH #1214	1
59	35701A	Insulator - Brush Holder	2
60	67913A	Spring	2
61	64600A	Holder - Brush	2
62	677211	Clamp - Brush	2
63	87200A	Washer - #8 INT Tooth Lock	2
64	40900A	Brush - Motor	2
65	962027	Screw - 8-32 x 1/2 Pn	2
66	911926	Terminal	2
67	42800A	Field Assembly - 115V	1
	42818A	Field Assembly - 240V	1
68	980699	Washer - SH #1210	2
69	58602A	Spring	1
70	85358A	Screw - 10-24 x 3½ Pn SS	2
71	51126A	Bearing	1
72	60800A	Baffle	2
73	10111A	Armature - 115V	1
	10112A	Armature - 230V	1
74	65302A	Key	1
75	58113A	Seal	1
76	902550	Bearing	1
77	63701A	Gear - Pinion	1
78	57701A	Ring - Retaining	1
79	962070	Screw, 6-32 x ¼	2

IVIE Enterprises

www.ivie-ent.com Ph:(918)254-5161 or (888)262-5161 Fax:(918)250-4807

AMERICAN SANDERS TECHNOLOGY
 Model American B-2 7" Spinner Edger
 Wiring Diagram 3/93



WIRING DIAGRAM - MODEL - AMERICAN B-2 EDGER

CAUTION - Repairs by qualified personnel only.
 ACHTUNG - Reparaturen nur durch Facharbeiter.
 PRECAUTION - Reparations par personnel specialise seulement.
 PRECAUCION - Reparaciones por personal calificado deberian hacer reparaciones.

