



MAPLE FLOORING MANUFACTURERS ASSOCIATION

—MFMA—



COUNT ON THE VERSATILITY OF MAPLE AND THE QUALITY OF MFMA

No other sports surface can compare to a maple floor installed by an MFMA associate member. You can count on its versatility, resiliency, long lasting beauty, and easy, low cost maintenance year after year. And, the Maple Flooring Manufacturers Association trademark on each piece of flooring insures you of unexcelled quality.

Versatility

Select MFMA maple for your sports floor and be assured that it will stand up to the roughest games, the toughest abuse, and the most wear. MFMA maple is made to naturally take the knocks of basketball, volleyball, roller-skating, and racquetball — even normal street shoe activities.

Resiliency

Your teams, as well as your maintenance crew, will appreciate the remarkable resiliency of MFMA maple flooring. It's easy on the feet — affords better footing and fewer leg and ankle injuries. The construction and natural "give" of MFMA maple flooring provides a resilient, "live action" underfoot that cannot be matched.

And, your maintenance crew will save time and money on day-to-day and month-to-month care because a natural MFMA maple floor is easy to clean and retains a fine appearance.

Long Lasting Beauty

The truly long lasting beauty of an MFMA maple floor can be coupled with its easy, low cost maintenance. The very nature of MFMA maple is a very hard, dense, fine-fibered wood that is non-splintering, long wearing and resilient. The closeness of grain and smoothness of surface afford no lodging place for germ-laden dirt to hide. It is a particularly clean and sanitary flooring that will maintain its beauty for years.

The MFMA Trademark is Your Guarantee...

... of consistent quality, uniform grading standards, dimensions and species, and proper kiln-drying. The Maple Flooring Manufacturers Association promotes excellence in product quality and installation through continual sponsorship of research and by providing educational materials that cover the technical aspects of manufacture, installation and maintenance. The MFMA trademark assures the highest industry standards and guarantees customers' years of complete satisfaction.

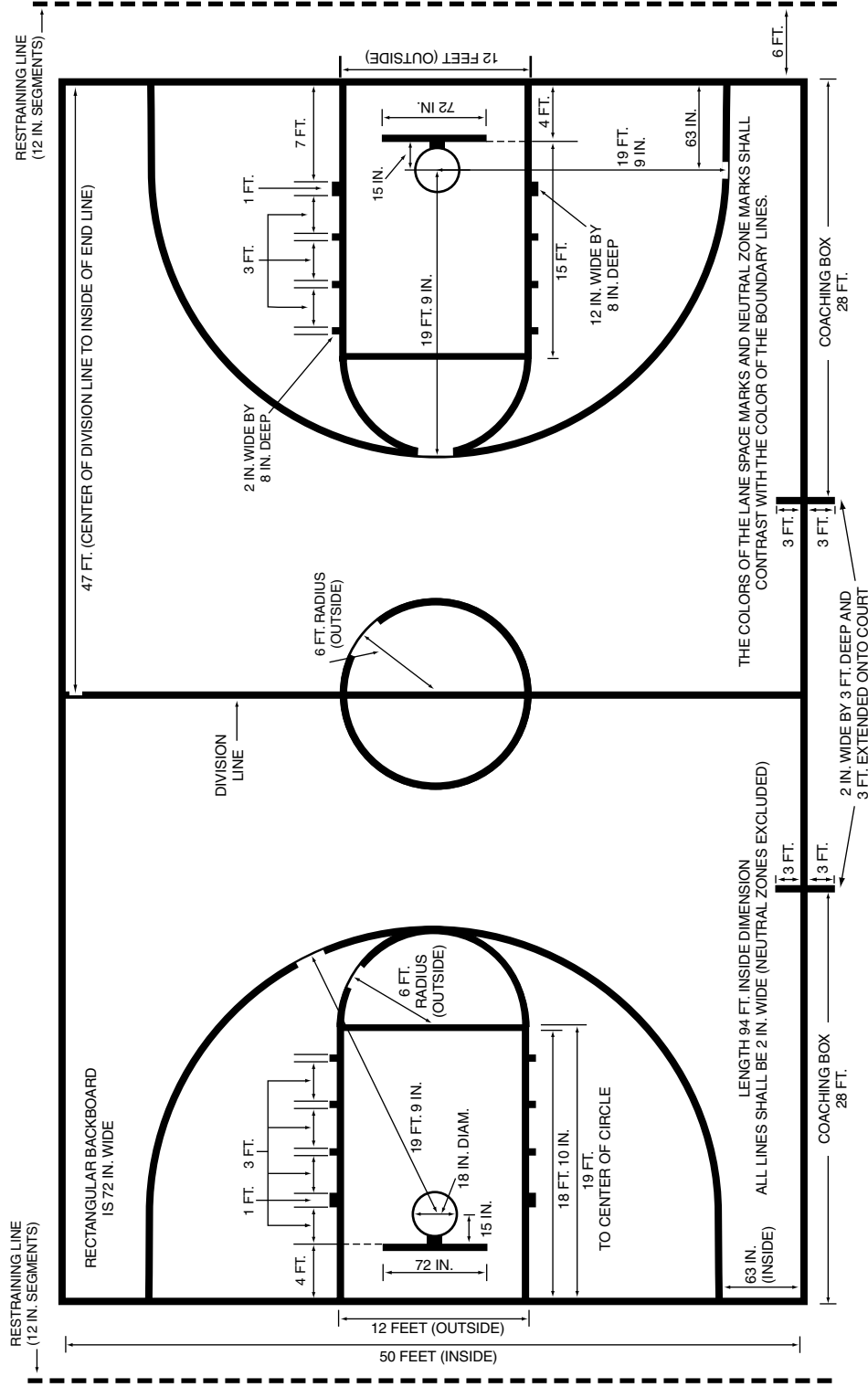
Look for the MFMA trademark on your maple flooring.



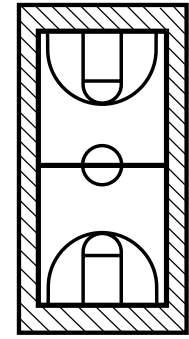
For more informative data about MFMA Maple, consult a professional flooring installer — your nearest MFMA Associate Member. Call MFMA headquarters for a current list.

*Court dimensions given in U.S. and metric measurements (artist's renderings, not all courts to scale).
© 2001. All diagrams subject to annual review and change.*

N.C.A.A. COLLEGE BASKETBALL COURT



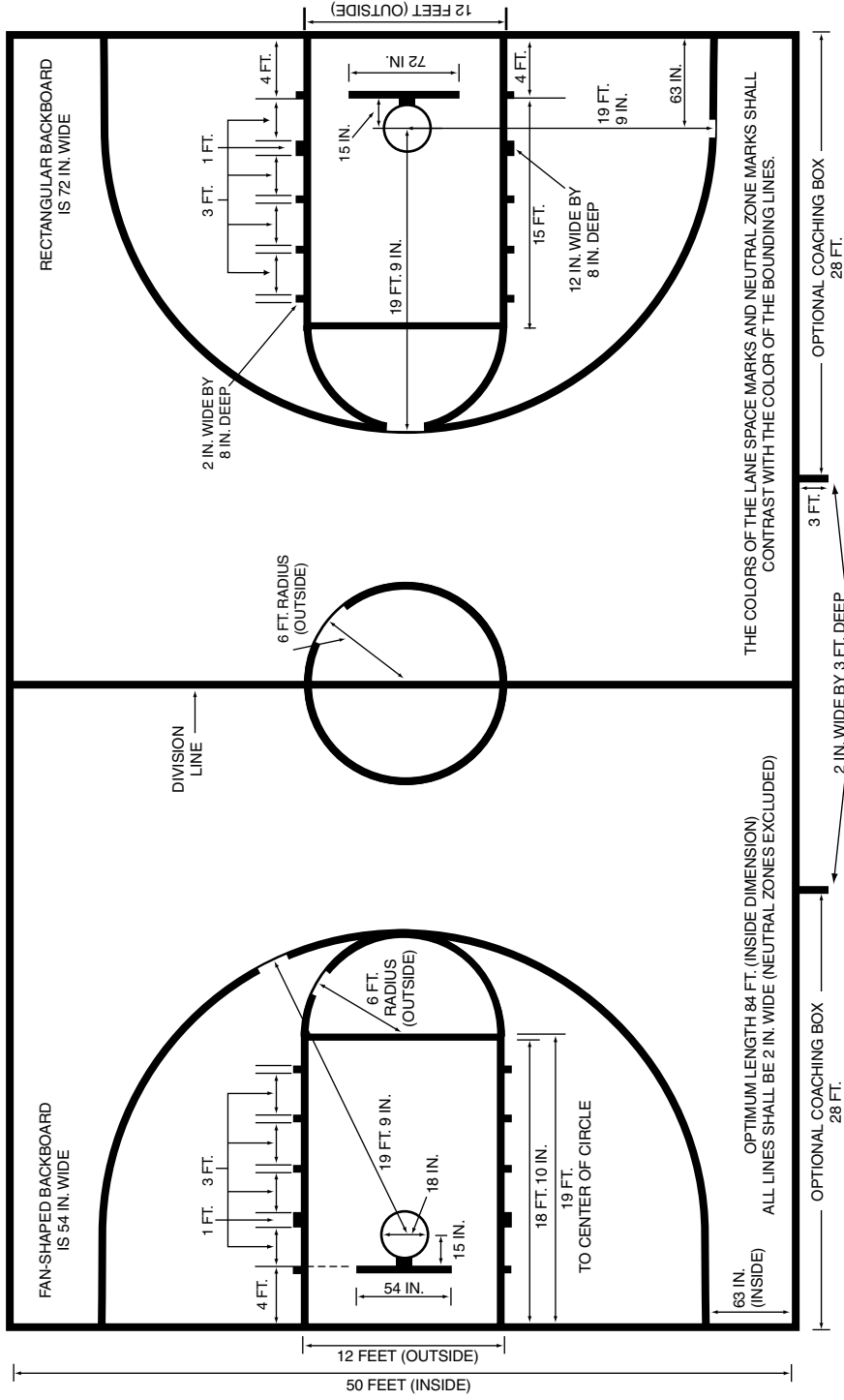
- The color of the lane space marks and neutral zone marks shall contrast with the color of the bounding lines. The midcourt marks shall be the same color as the bounding lines.
- Minimum of 3' (preferably 10') of unobstructed space outside court boundary.



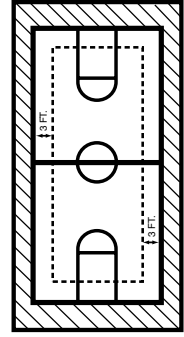
NCAA Court Marking
 Reprinted with permission of:
 National Collegiate Athletic Association
 700 W. Washington Street
 P.O. Box 6222
 Indianapolis, IN 469206-6222
 (317) 917-6222
 www.ncaa.org

HIGH SCHOOL BASKETBALL COURT

MINIMUM OF 3 FT. (PREFERABLY 10 FT.) OF UNOBSTRUCTED SPACE OUTSIDE COURT BOUNDARY. IF IMPOSSIBLE TO PROVIDE 3 FT., A NARROW BROKEN 1 IN. LINE SHOULD BE MARKED INSIDE THE COURT PARALLEL WITH AND 3 FT. INSIDE THE BOUNDARY. IF COURT IS LESS THAN 74 FT. LONG, IT SHOULD BE DIVIDED BY TWO LINES, EACH PARALLEL TO AND 40 FT. FROM THE FARTHER END LINE.



- The 3-point line is the same color as the free throw lane line and semicircle. Division line must be visible through any logos.
- The color of the lane space marks and neutral zone marks shall contrast with the color of the bounding lines. The midcourt marks shall be the same color as the bounding lines.
- If impossible to provide 3' (91.4 cm) unobstructed space outside the court boundary, a narrow broken 1" (2.5 cm) line should be marked inside the court parallel with and 3' (91.4 cm) inside the boundary. (See diagram at right).



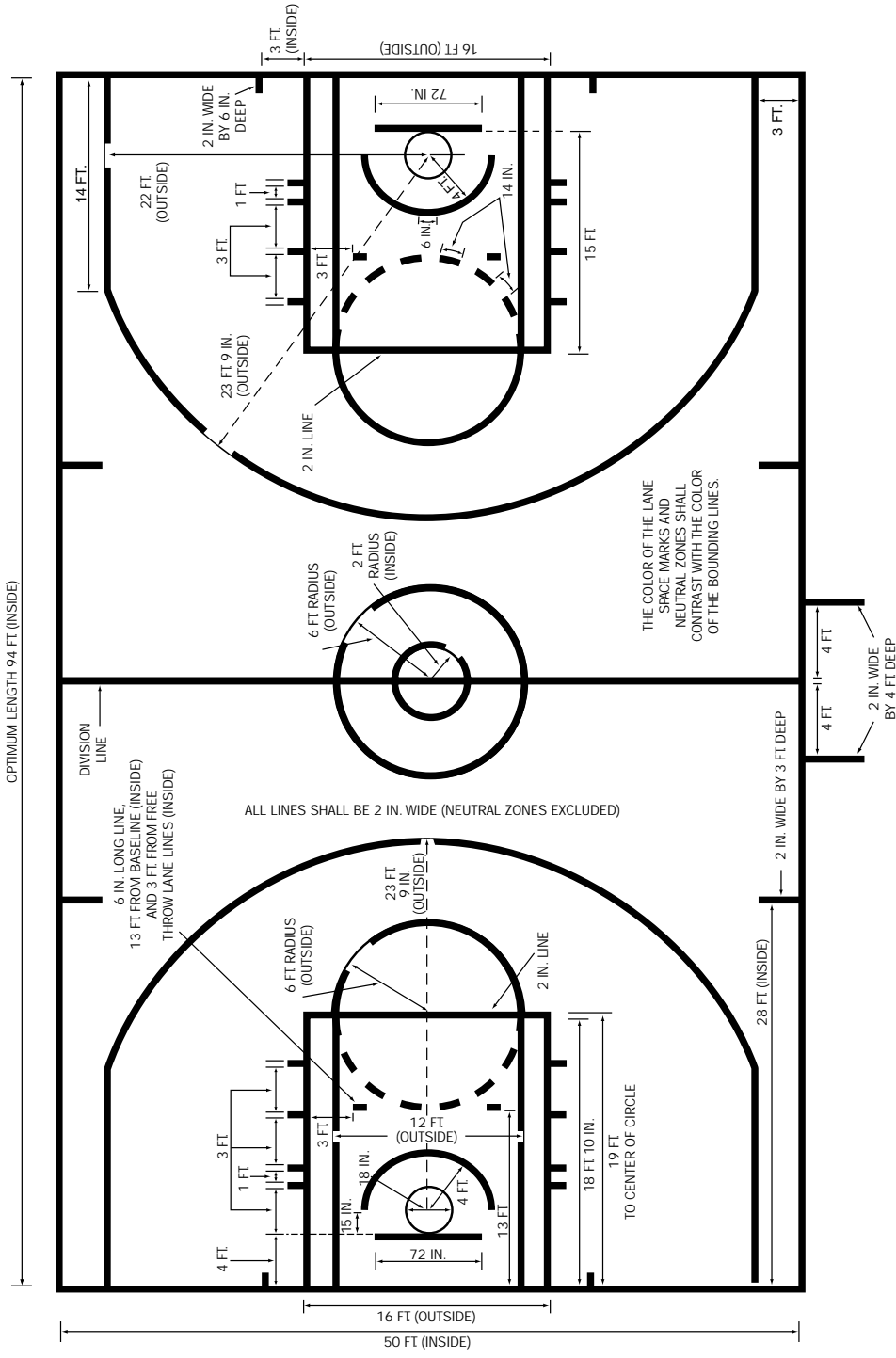
High School Court Marking
Reprinted with permission of:
 National Federation of State High School Associations
 P.O. Box 690
 Indianapolis, IN 46206
 (317) 972-6900
 www.nfhs.org

* This diagram is subject to annual review and change.

N.B.A. Basketball Court

Section 1 — Court and Dimensions

- The playing court shall be measured and marked as shown in court diagram.
- A free throw lane shall be marked at each end of the court with dimensions and markings as shown on court diagram. All boundary lines are part of the lane; lane space marks and neutral zone marks are not. The color of the lane space marks and neutral zones shall contrast with the color of the boundary lines and college lanes, if applicable. The areas identified by the lane space markings are two inches by eight inches and the neutral zone marks are twelve inches by eight inches.
- A free throw line, 2" wide, shall be drawn across each of the circles indicated in the court diagram. It shall be parallel to the end line and shall be 15" from the plane of the face of the backboard.
- Three-point field goal area which has parallel lines 3' from the sidelines, extending 14' from the baseline, and an arc of 23' 9" from the middle of the basket which intersects the parallel lines.
- Four hash marks shall be drawn (2" wide) perpendicular to the sideline on each side of the court and 28' from the baseline. These hashmarks shall extend 3' onto the court.



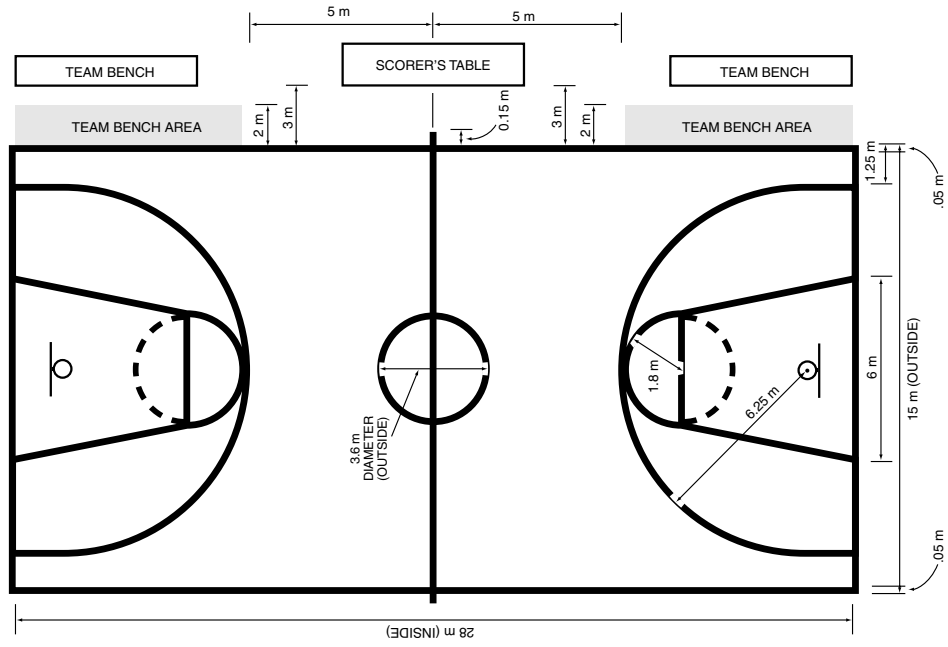
- Four hashmarks shall be drawn (2" wide) perpendicular to the sideline on each side of the court and 25' from the baseline. These hashmarks shall extend 6" onto the court.
- Four hashmarks shall be drawn (2" wide) perpendicular to the baseline on each side of the free throw lane line. These hashmarks shall be 3' from the free throw

- the mid-court line. This will designate the Substitute Box area.
- A half-circle shall be created 4' from the center of the basket. Five hash marks (2" x 6") shall be placed on the floor. Two shall be at the bottom of the half circle. One at a 90 degree angle from the baseline and the other two at a 45 degree angle from the center of the basket.

NBA Court Marking
Reprinted with permission of:
 National Basketball Association
 Olympic Tower
 645 Fifth Avenue
 New York, NY 10022
 (212) 826-7000
 www.nba.com

INTERNATIONAL OLYMPIC BASKETBALL COURT

FULL SIZE REGULATION COURT



REGULATION FREE THROW LANE

ALL LINES ARE 5 cm WIDE

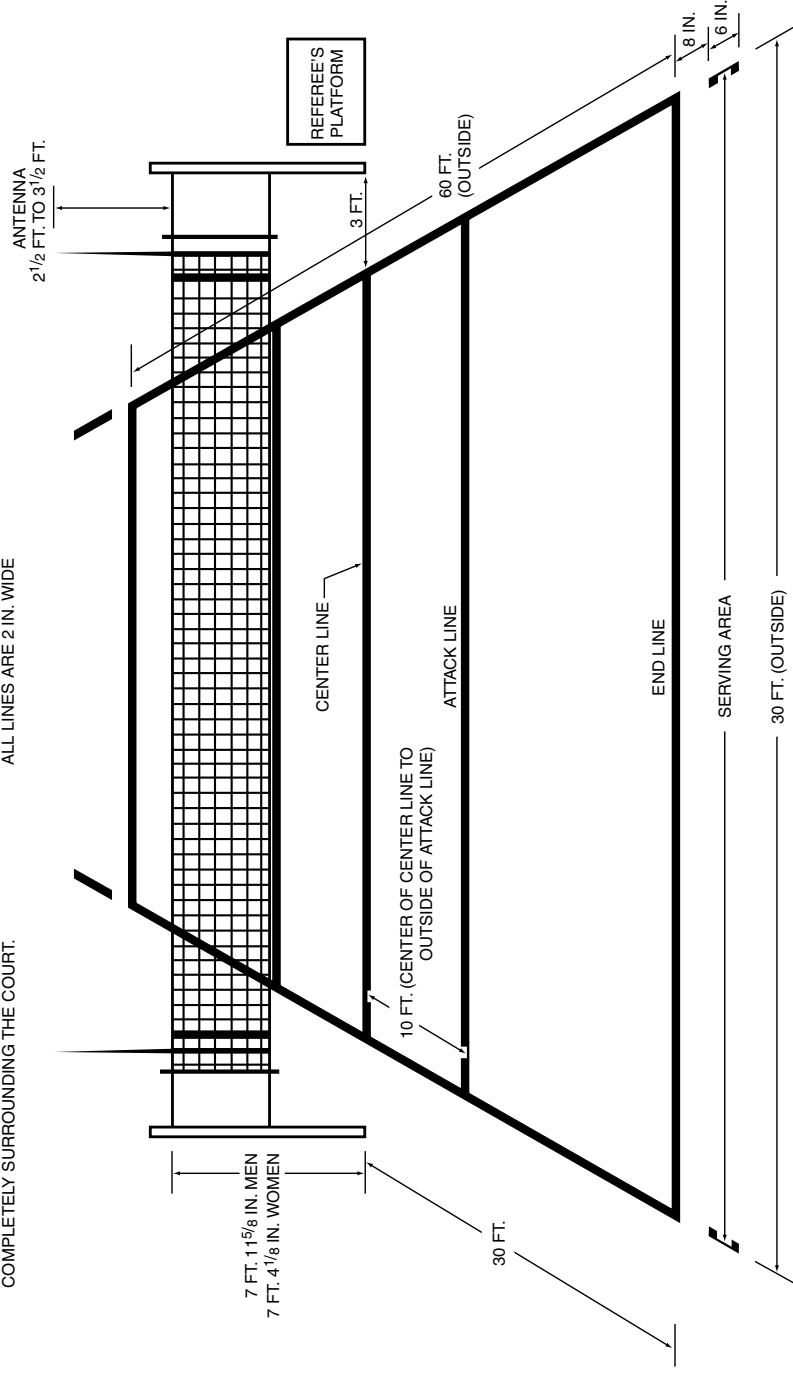
• ALL LINES ARE 5 cm WIDE.

Reprinted with permission of:
 USA Basketball
 5465 Mark Dabling Boulevard
 Colorado Springs, CO 80918-3842
 (719) 590-4800
 www.usabasketball.com

HIGH SCHOOL VOLLEYBALL COURT

THERE SHALL BE A MINIMUM CLEARANCE OF 6 FT. COMPLETELY SURROUNDING THE COURT.

ALL LINES ARE 2 IN. WIDE



The Court and Markings

- The court shall be 60' (18 m) long and 30' (9 m) wide, including the outer edges of the boundary lines. An area above the court that shall be clear of any obstruction and at least 27' high is recommended.
- It is recommended all boundary lines shall be of one clearly visible color.
- Boundary lines shall be 2" wide and at least 6' from walls or obstacles. The end lines are the boundary lines on the short sides of the court. The sidelines are the boundary lines on the long sides of the court.
- A centerline, 2" wide, parallel to and equidistant from the end lines, shall separate the court into two playing areas.
- An attack line, 2" wide, shall be drawn across each playing area from sideline to sideline, the midpoint of which shall be 10' from the midpoint of the center line and parallel to it.
- A serving area which is 30' wide shall be provided behind and excluding the end line. It shall be laterally limited by two short lines, each 6" long by 2" wide. Drawn 8" behind and perpendicular to

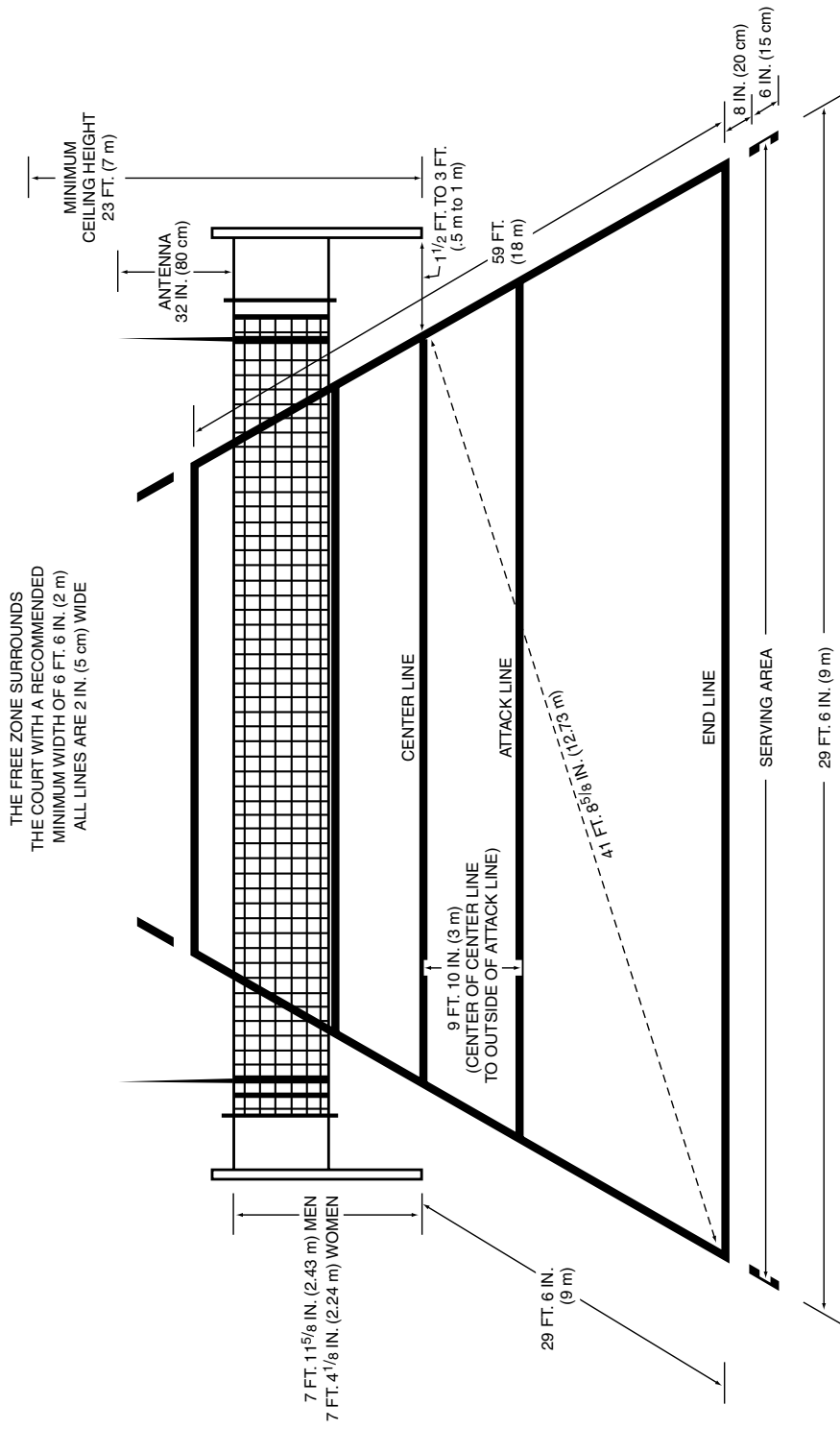
the end line as extensions of the sidelines. Both lines are included in the width of the serving area. Each serving area shall be a minimum of 6' in depth. In the event that such a space is not available, the serving area shall extend into the court to whatever distance necessary to provide the minimum depth and be so marked.

- NOTE: ALL LINES ARE 2" (5.1 cm) WIDE

Reprinted with permission of:

National Federation of State High School Associations
P.O. Box 690
Indianapolis, IN 46206
(317) 972-6900
www.nfhs.org

ALL VOLLEYBALL COURT MARKINGS INCLUDING INTERNATIONAL (OLYMPIC) EXCEPT HIGH SCHOOL



- Dimensions are measured to the outside edges of all lines, except attack line, which is measured from middle of center line to rearmost edge of attack line.

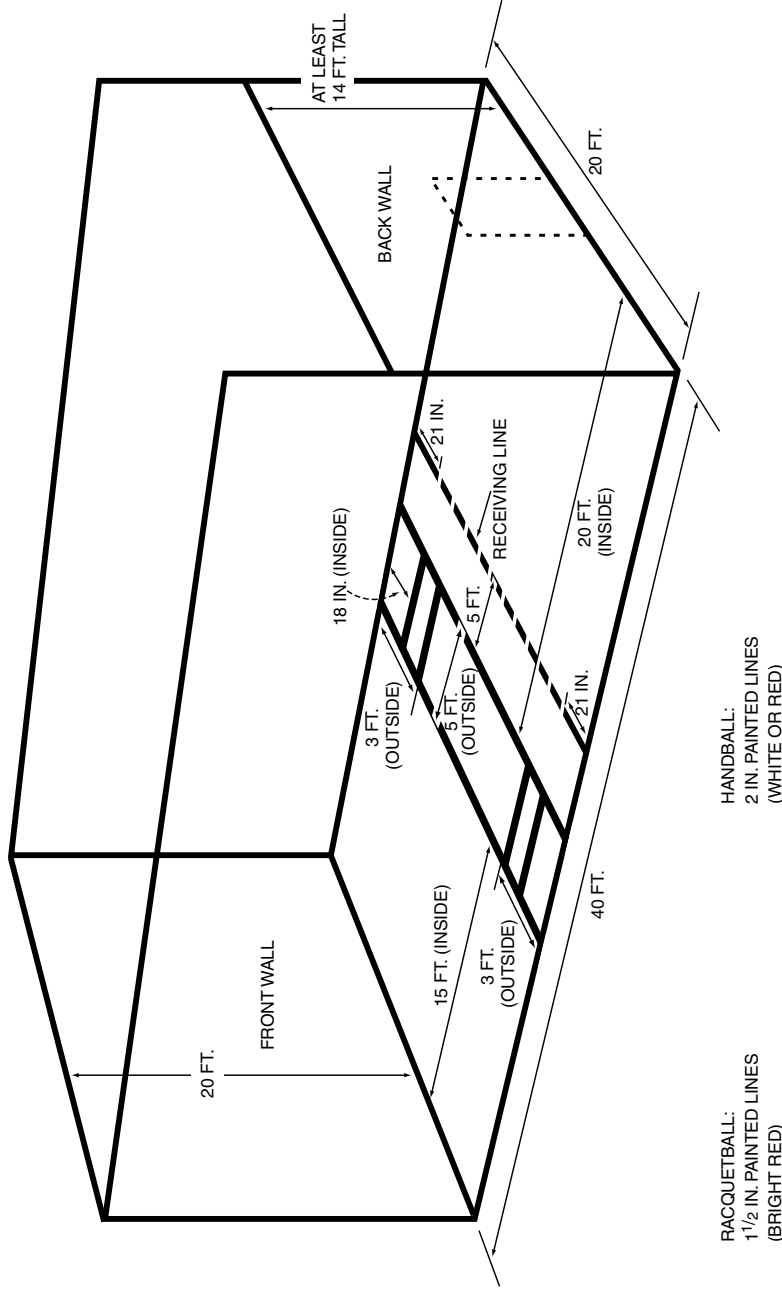
Reprinted with permission of:

National Association for
Girls and Women in Sport
1900 Association Drive
Reston, VA 20191-1599
(703) 476-3450
www.aahperd.org/nagws

Reprinted with permission of:

USA Volleyball
715 South Circle Drive
Colorado Springs, CO 89010-2368
(719) 228-6800
www.usavolleyball.org

FOUR WALL HANDBALL AND RACQUETBALL COURTS



Racquetball Four-Wall Rules

Rule 2.1 — Court. The specifications for a standard four-wall racquetball court are:

- **Dimensions.** The dimensions shall be 20' high and 40' long with each back wall at least 14' high.
- **Lines and Zones.** Racquetball courts shall be divided and marked on the floors with 1-1/2" wide lines as follows:
 - *Short Line.* The back edge of the short line is midway between, and is parallel with, the front and back walls.
 - *Service Line.* The front edge of the

- service line is parallel with, and 5' in front of, the back edge of the short line.
- *Service Boxes.* The service boxes are located at each end of the service zone and are designated by lines parallel with the side walls. The inside edges of the lines are 18" from the side walls.
- *Drive Serve Lines.* The drive serve lines, which form the drive serve zone, are parallel with the side wall and are within the service zone. The outside edge of the line is three feet from the side wall.

- *Receiving Line.* A broken line parallel to the short line. The back edge of the receiving line will be five feet from the back edge of the short line. The receiving line will begin with a line 21" long that extends from each side wall; the two lines will be connected by an alternate series of 6" spaces and 6" lines (17 six-inch spaces and 16 six-inch lines).

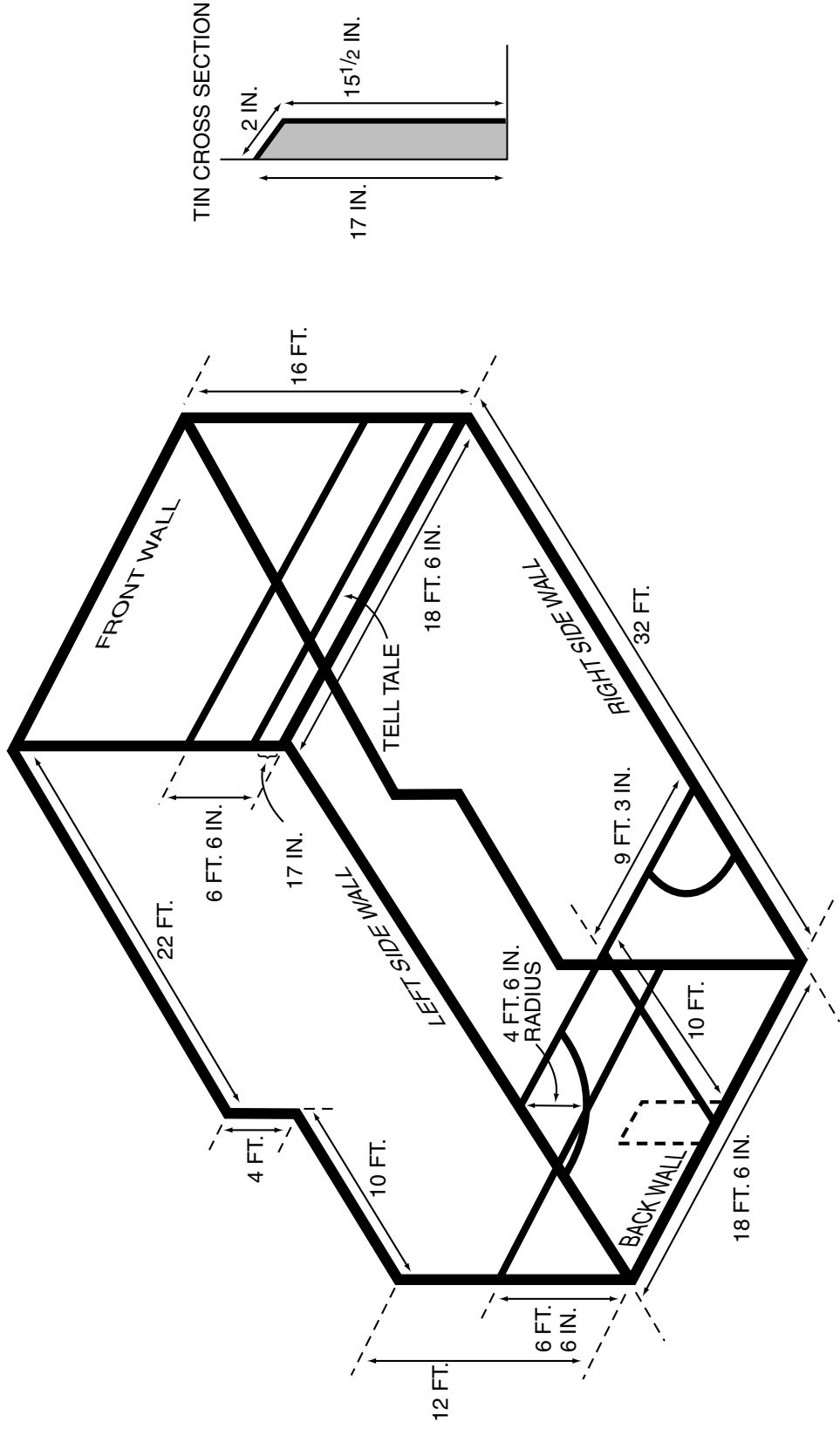
Reprinted with permission of:

United States Handball Association
2333 N. Tucson Boulevard
Tucson, AZ 85716
(520) 795-0434
www.ushandball.org

Reprinted with permission of:

United States Racquetball Association
1685 West Uintah Street
Colorado Springs, CO 80904-2969
(719) 635-5396
www.usra.org

STANDARD SINGLES SQUASH COURT

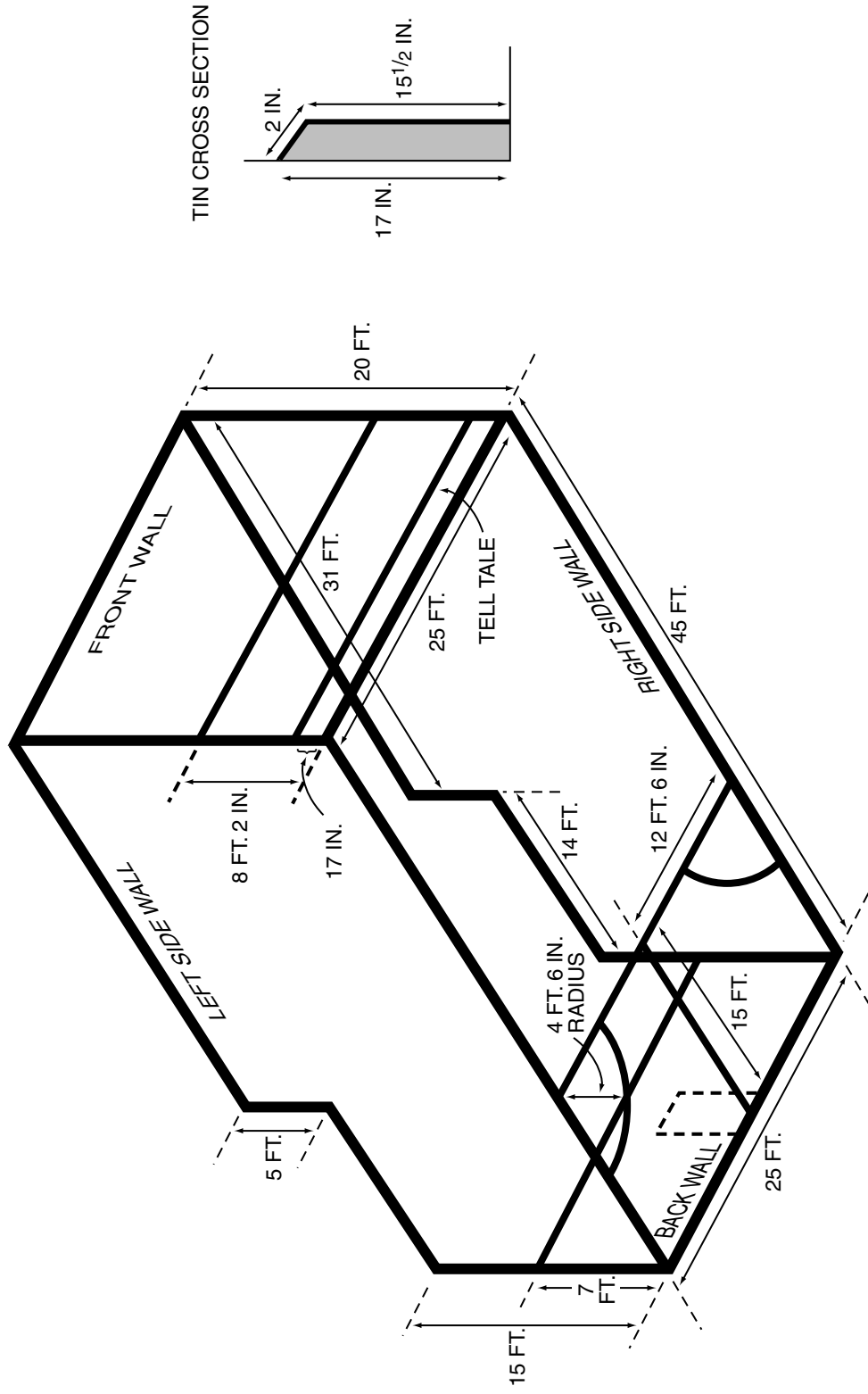


Reprinted with permission of:
 United States Squash Racquets
 Association Inc.
 P.O. Box 1216
 23 Cynwyd Road
 Bala Cynwyd, PA 19004
 (610) 667-4006
 www.us-squash.org

- Markings are inside dimensions as lines are out of bounds (except in service areas).
 - Dimensions are measured to the center of all lines. All lines shall be 1" (2.5 cm) wide, and shall be colored red.
- NOTE: International squash markings vary significantly from the court shown above. Contact USSRA for a detailed diagram.

* This diagram is subject to annual review and change.

STANDARD DOUBLES SQUASH COURT

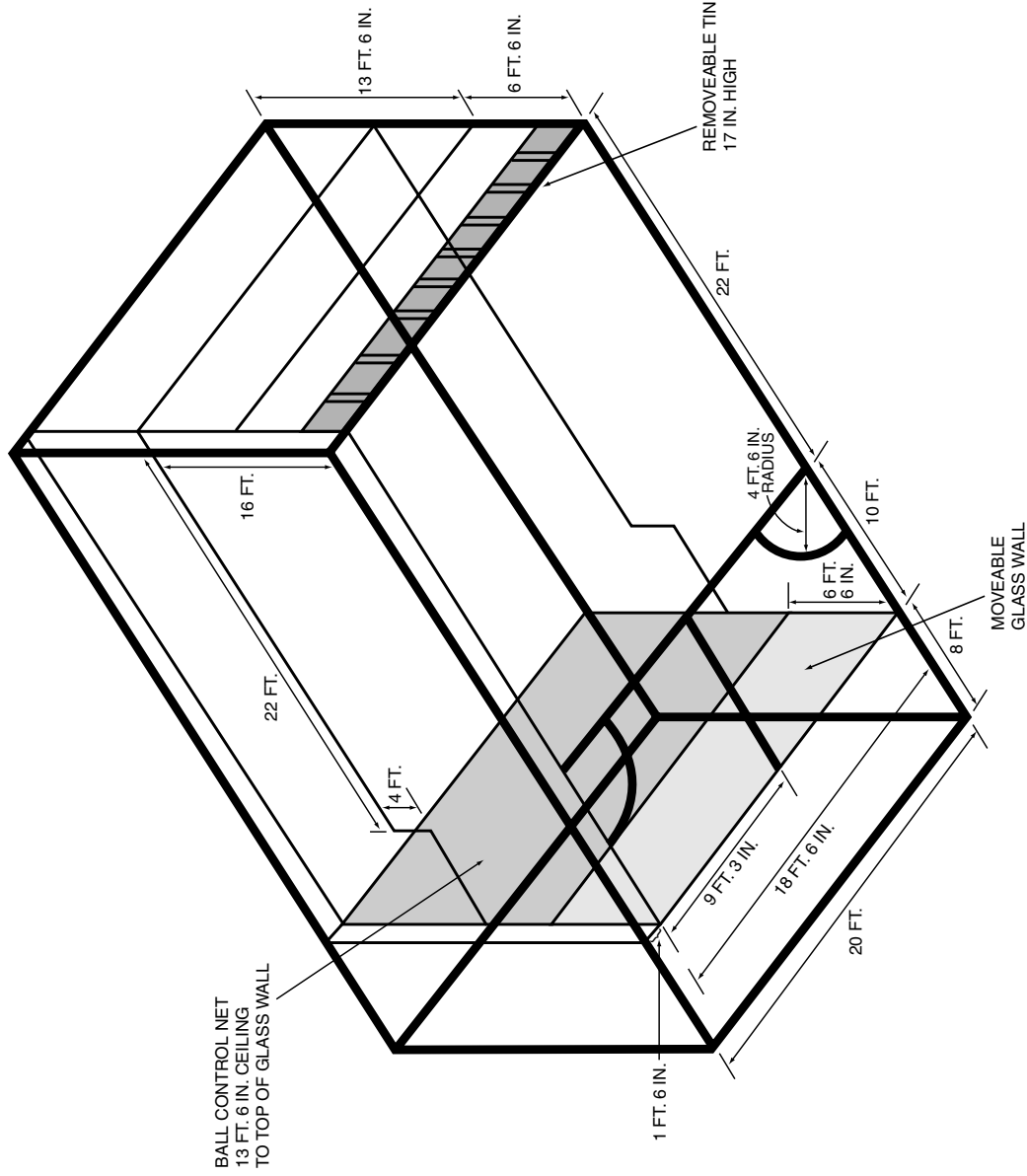


- Markings are inside dimensions as lines are out of bounds (except in service areas).
- Dimensions are measured to the center of all lines. All lines shall be 1" (2.5 cm) wide, and shall be colored red.

Reprinted with permission of:
 United States Squash Racquets
 Association Inc.
 P.O. Box 1216
 23 Cynwyd Road
 Bala Cynwyd, PA 19004
 (610) 667-4006
 www.us-squash.org

NOTE: International squash markings vary significantly from the court shown above. Contact USSRA for a detailed diagram.

SQUASH "CONVERSION" COURT

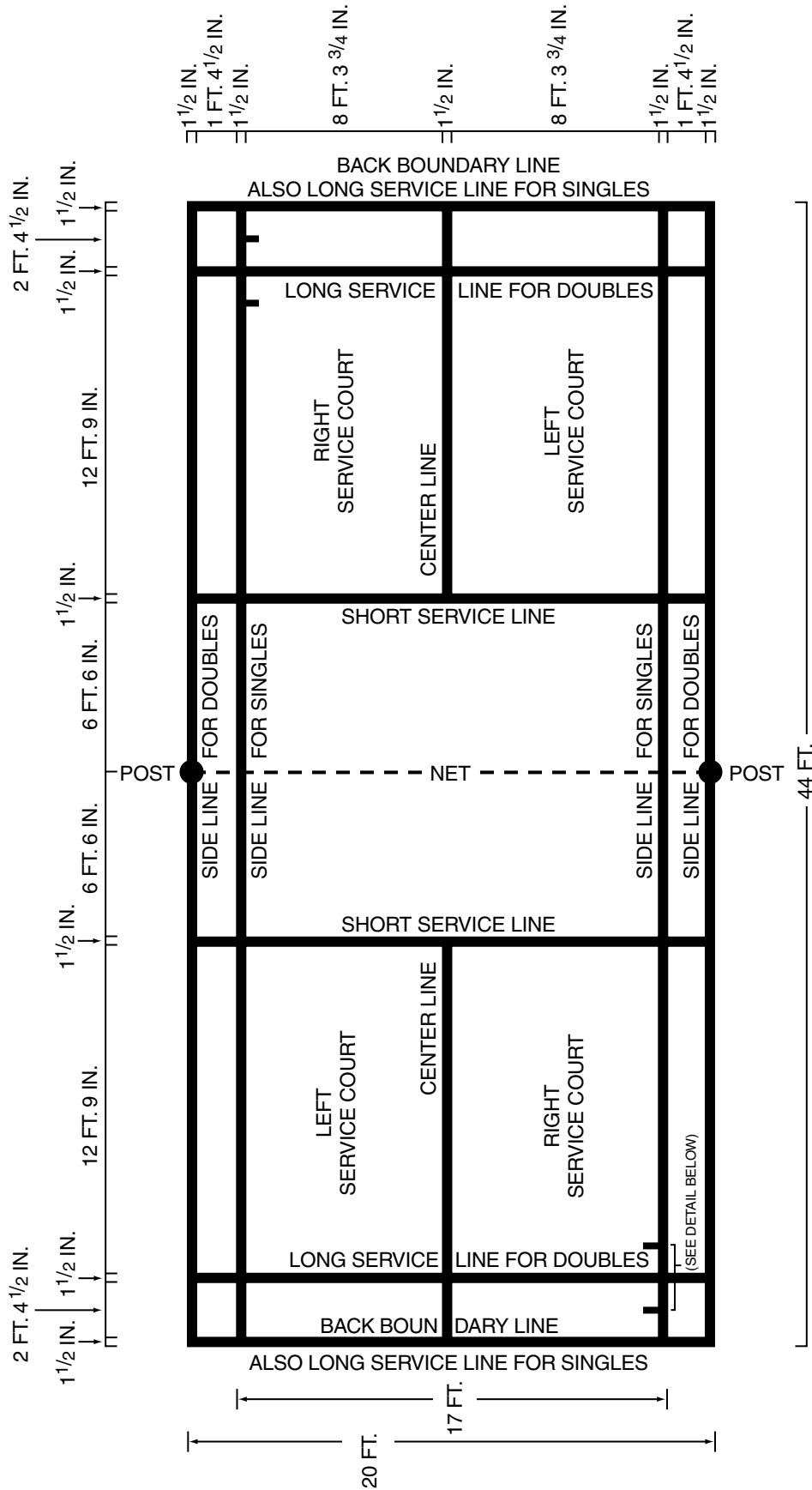


- Dimensions are measured to the center of all lines. All lines shall be 1" (2.5 cm) wide, and shall be colored red.
- NOTE: One side wall must be moved 1' 6" in from the racketball dimension (if possible) in order to form a regulation size squash court.

For More Information Contact:

United States Squash Racquets Association, Inc.
 P.O. Box 12116
 23 Cynwyd Road
 Bala Cynwyd, PA 19004
 (610) 667-4006
www.us-squash.org

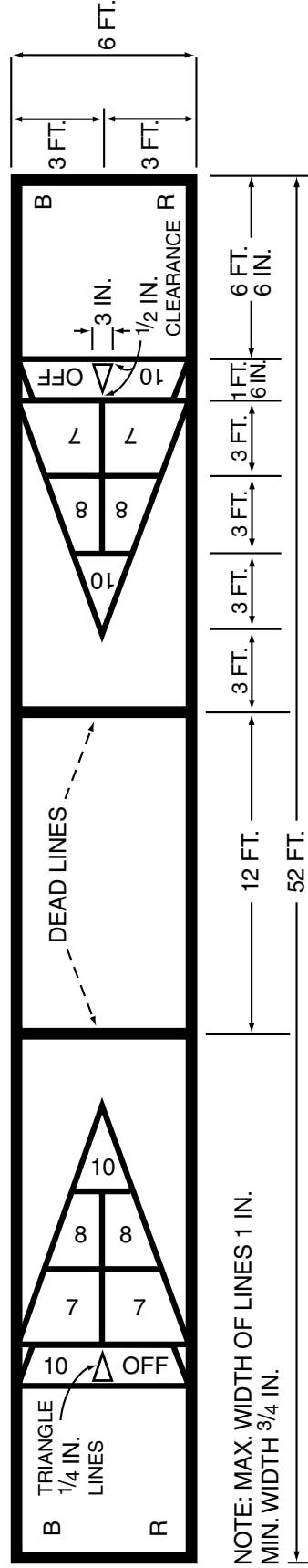
BADMINTON COURT



• Dimensions are measured to the outside edges of all lines. All boundary lines shall be 1-1/2" wide, and shall be easily distinguishable and preferably colored white or yellow.

Reprinted with permission of:
 International Badminton Federation
 Manor Park Place
 Rutherford Way
 Cheltenham
 Gloucestershire
 GL519TU
 United Kingdom
 +44 1242 234 904
 www.intbadfed.org

STANDARD SHUFFLEBOARD COURT



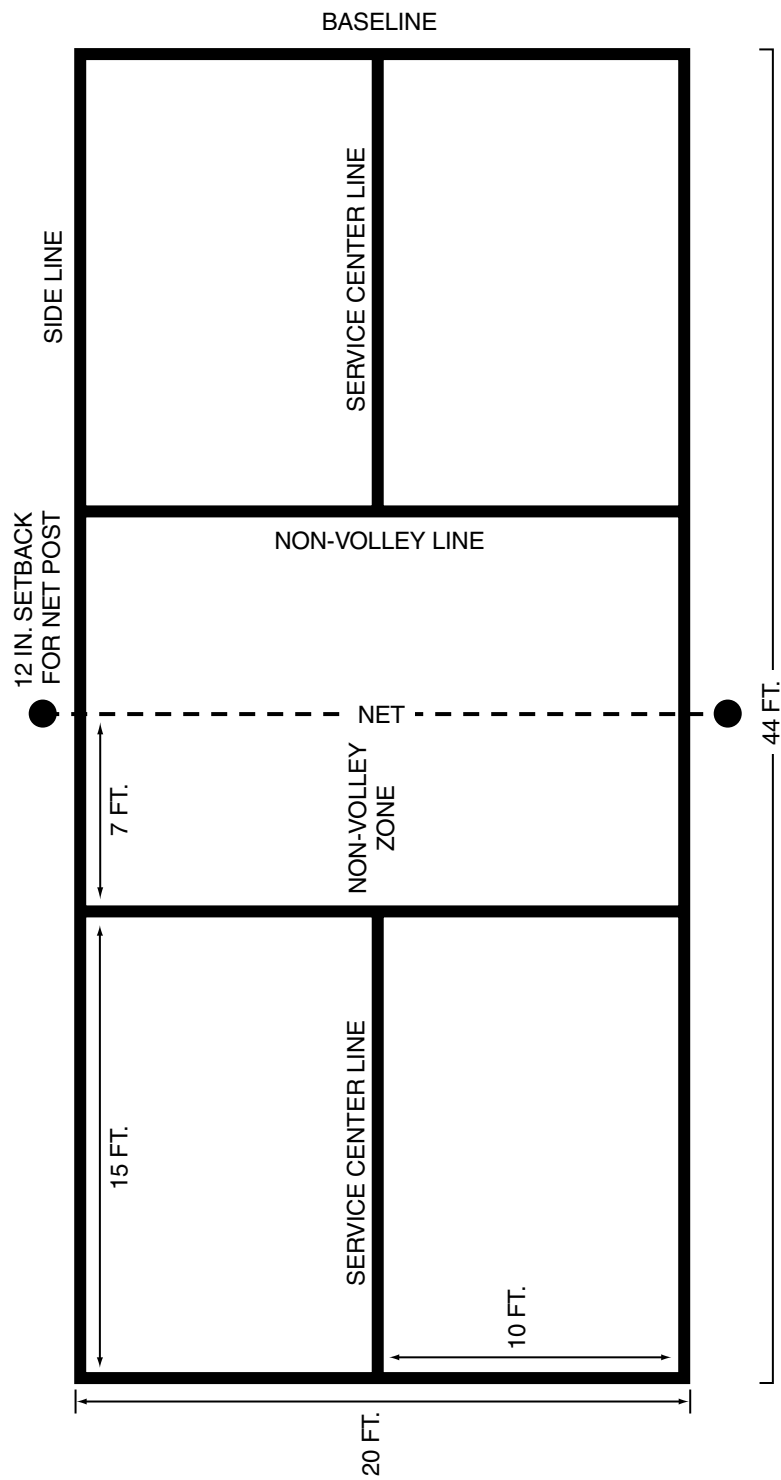
B - BLACK | WHEN PLAYING DOUBLES
R - RED

FLOORS WITH MULTIPLE GAME MARKINGS SHALL HAVE
A VOID BETWEEN INTERSECTING GAME LINES.

NOTE: Number markings are optional.
All line dimensions must be measured from
line centers.

Reprinted with permission of:
National Shuffleboard Association, Inc.
c/o Howard J. Rayle
2508 Westmoor Road
Findlay, OH 45840
(419) 422-7263

PICKLEBALL COURT



- Dimensions are measured to the outside edges of all lines. All boundary lines shall be 1-1/2" wide, and shall be easily distinguishable and preferably colored white or yellow.

Reprinted with permission of:
 United States Pickleball Association
 3504 Fox Spit Road
 Langley, WA 98260
 (888) 775-9615
www.usapa.org



M F M A

Maple Flooring Manufacturers Association, Inc.

**MFMA gratefully acknowledges the assistance of
sponsoring athletic organizations in the preparation of this guide.**

Maple Flooring Manufacturers Association

60 Revere Drive, Suite 500

Northbrook, IL 60062 USA

847/480-9138

Fax: 847/480-9282

Web site: www.maplefloor.org

E-mail: mfma@maplefloor.org

Copyright © 2001

Maple Flooring Manufacturers Association

Revised 02/01